

DATA SHEET

Specimen Grinding Machine



Specimen grinding machine 55-C0202 bench model version

General description

The machine is used to grind and polish rock and concrete specimens, natural stones, ceramic materials, etc. Bench model version with central grinding head and horizontal movable specimen platform.

Suitable to grind up to 2x 150 mm concrete cubes, 2x 160x320 mm concrete cylinders, 2x or 4x rock cores.

The machine is supplied complete with:

- frontal safety guard
- cooling system by main water supply or recirculating tank, filter and pump
- 6 standard abrasive sectors

Optional parts: clamping jigs for cylinders/cores/cubes and diamond abrasive sectors

Main features

- easy and precise grinding of concrete specimens, natural stones, block pavers, ceramic materials etc.
- high productivity with large base table for simultaneous grinding up to two concrete cubes 100 and 150 mm or two cylinders dia. 150 and 160 mm or up to 4 rock cores
- ergonomic compact bench model to save laboratory space
- improved reliability with cooling system by main water supply or recirculating system with water tank, filter and pump
- suitable for dry grinding procedure using dedicate accessory
- designed to ensure strict sample's tolerance dimensions required by main international standards, obtaining better specimens then more reliable compression testing results

Standards

- EN 12390-2
- ASTM D4543

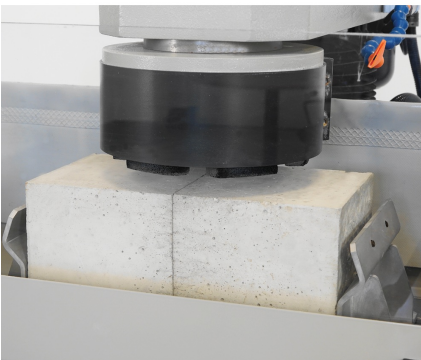
DATA SHEET

Specifications

Grinding chamber dimension: 800x330 mm
Specimen platform stroke: +/- 250 mm
Effective working area: 320x170 mm
Max specimen size: 150 mm cubes and 160x320 mm cylinders
N° of grinding segments: 6

Grinding wheel dia.: 180 mm
Grinding head rotating speed: 2800 rpm
Grinding head vertical stroke: 205 mm
Max vertical daylight: 340 mm
Min vertical daylight: 130 mm
Safety front guard conforming to CE

Total power: 1600 W
Machine overall dimensions (lxwxh): 1071x980x920 mm
Weight approx.: 300 kg
Tank overall dimensions (lxwxh): 500x255x200 mm
Weight approx.: 10 kg
Gross weight approx.: 350 kg

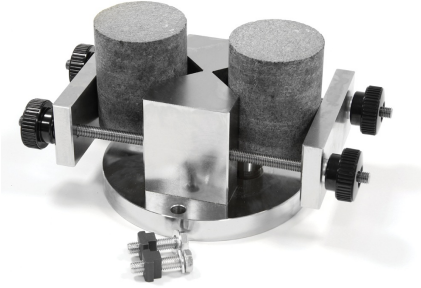


Specimen grinding machine 55-C0202 with locking system for two concrete cubes



32-D0534/B

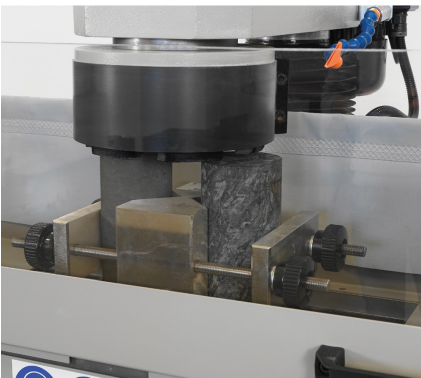
DATA SHEET



2-places core face preparation jig. 45-D0534/C



Specimen grinding machine 55-C0202 with locking system for two concrete cylinders (55-C0200/160 and 55-C0200/1602)



Specimen grinding machine 55-C0202 with 2-places core face preparation jig 45-D0534/C

Products

55-C0202

Grinding machine for concrete cubes, cylinders and rock cores. Bench model version with hand operated movable specimen platform.

55-C0202/Y

DATA SHEET

Grinding machine for concrete cubes, cylinders and rock cores. Bench model version with hand operated movable specimen platform.

55-C0202/Z

Grinding machine for concrete cubes, cylinders and rock cores. Bench model version with hand operated movable specimen platform.

Accessories and consumables

32-D0534/B

4-places core face preparation jig for grinding machine series 55-C0201/x and 55-C0202/x. Max core dia. 55 mm

32-D0534/C

2-places core smoothing jig suitable for grinding machines series 55-C0201/x and 55-C0202/x. Core dia. from 50 to 100 mm

55-C0200/100

Clamping device for concrete cylinders from 50 to 100 mm dia. Compatible with grinding machine series 55-C0201/x and 55-C0202

55-C0200/100Z

Device for clamping one additional cylindrical specimen from 50 up to 100 mm dia. It shall be used along with accessory 55-C0200/100.

Compatible with grinding machine series 55-C0201/x and 55-C0202

55-C0200/150C

Pair of lateral brackets suitable to lock cubes 100 and 150 mm side. Compatible with grinding machine series 55-C0202

55-C0200/160

Clamping device for concrete cylinders from 100 to 160 mm dia. Compatible with grinding machine series 55-C0201/x and 55-C0202

55-C0200/160Z

Device for clamping one additional cylindrical specimen from 100 up to 160 mm dia. It shall be used along with accessory 55-C0200/160.

Compatible with grinding machines series 55-C0201/x and 55-C0202

55-C0202/1

Spare set of 6 abrasive sectors

55-C0202/2

Set of 6 diamond abrasive sectors

55-C0202/3

Accessory for the use of an aspirator connected to the grinding machine series 55-C0202, suitable for dry grinding procedure. Pipes and aspirator not included